

We sell on quality

FIG30

SG Iron Strainer

DN15-DN200

Local regulations may restrict the use of this product to below the conditions quoted. In the interests of development and improvement of the product, we reserve the right to change the specification without notice.

Description

The Fig 30 is a cast iron integrally flanged Y-type strainer. The standard stainless steel screen in the DN15 to DN80 size range has 0.8 mm perforations, in the DN100 to DN200 size range it has 1.6 mm perforations. Optional mesh sizes are available as well as monel screens. The strainer cap can be drilled and tapped for blowdown and drain valves if required.

Standards

This product fully complies with the requirements of the European Pressure Equipment.

Certification

This product is available with a manufacturer's Typical Test Report. Note: All certification / inspection requirements must be stated at the time of order placement

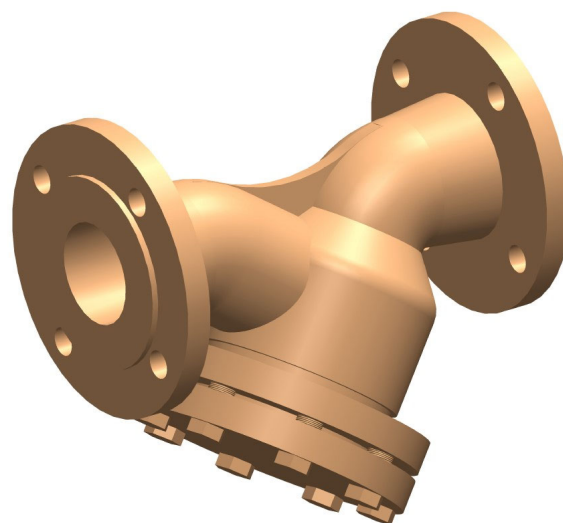
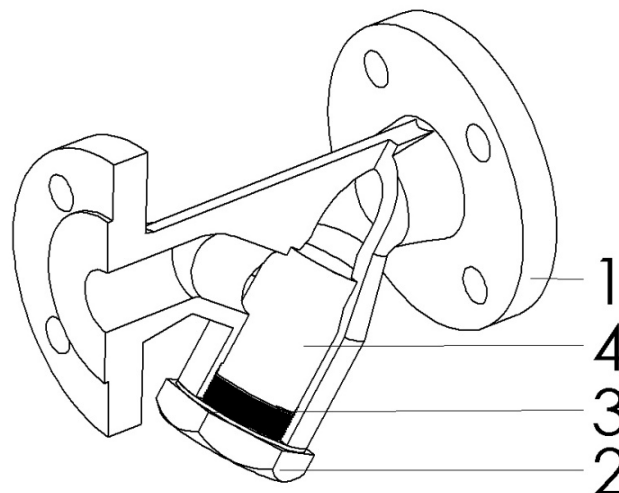
Blowdown or drain valve connections

The cap can be drilled to the following sizes to enable a blowdown or drain valve to be fitted.

Strainer size	Blowdown valve	Drain valve
DN15	¼"	¼"
DN20 and DN25	½"	½"
DN32 and DN40	1"	¾"
DN50, DN65, DN80, DN100 and DN125	¾"	¾"
DN150 and DN200	2"	¾"

Materials

No.	Part	Material
1	Body	Cast iron IN 1691 GG 20
2	Cap	DN15 to DN50 SG iron DIN 1693 GG 25
	Cover	DN65 to DN200 Cast iron DIN 1691 GG 20
3	Cap gasket	Reinforced exfoliated graphite
4	Strainer	Austenitic stainless steel ASTM A240 316L
5	Bolts	Carbon steel BS 4169 Gr. 8.8



We sell on quality

FIG30

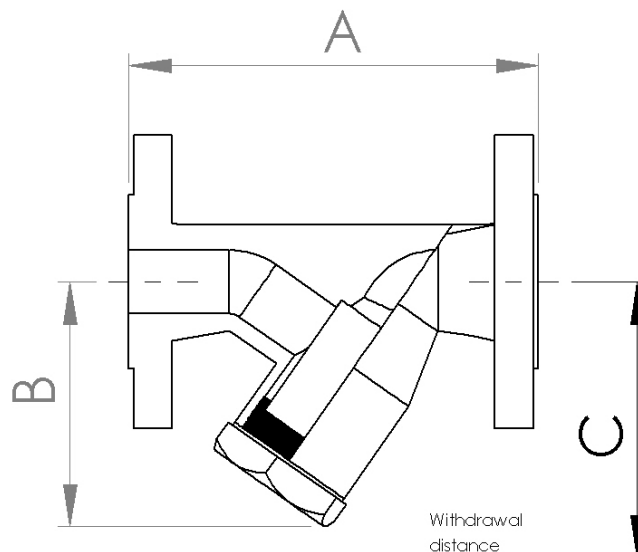
SG Iron Strainer

DN15-DN200

Local regulations may restrict the use of this product to below the conditions quoted. In the interests of development and improvement of the product, we reserve the right to change the specification without notice.

Dimensions/weights (approximate) in mm and kg

Size	A	B	C	Screening area cm ²	Weight (Kg)
DN15	130	70	110	27	1.8
DN20	150	80	130	43	2.7
DN25	160	95	150	73	3.4
DN32	180	135	225	135	6.0
DN40	200	145	240	164	7.2
DN50	230	175	300	251	10.9
DN65	290	200	335	327	21.7
DN80	310	210	340	361	25.9
DN100	350	255	415	545	38.5
DN125	400	300	510	843	63.0
DN150	480	345	575	1117	87.0
DN200	600	435	730	1909	153.0



Safety information, installation and

maintenance For full details see the Installation and Maintenance Instructions (IM-S60-18) supplied with the product.

Installation note: The strainer should be installed in the direction of flow, as indicated on the body. On applications involving steam or gases the pocket should be in the horizontal plane. On liquid systems the pocket should point downwards. Suitable isolation valves must be installed to allow for safe maintenance and trap replacement.

Maintenance note: Maintenance can be completed with the strainer in the pipeline.

How to order

Example: 1 off DN25 FLUID LINE Fig 30 strainer having PN16 flanged connections. The strainer must be supplied with a stainless steel screen having 0.8 mm perforations

Spare parts

The spare parts available are shown in solid outline. Parts drawn in broken line are not supplied as spares.