

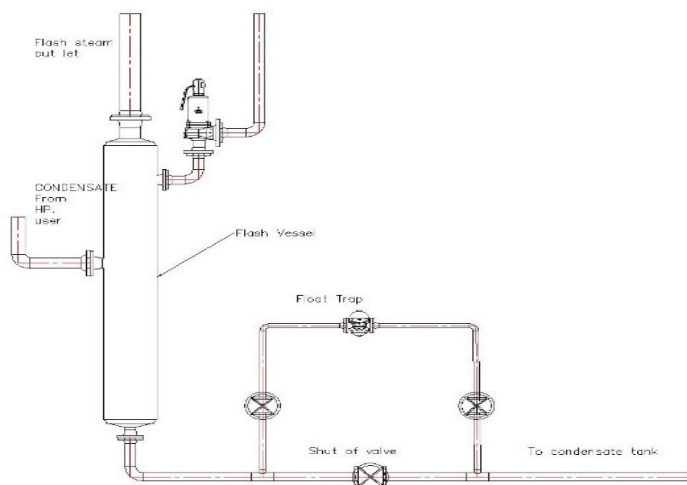
Flash Vessels

Type VD Flash Vessels Systems

Local regulations may restrict the use of this product to below the conditions quoted. In the interests of development and improvement of the product, we reserve the right to change the specification without notice.

Application

Condensate flash vessel Condensate flash vessels can be used in all steam plants where condensate from steam processors is reduced to a lower pressure, so that flash steam is formed by revalorization. In the flash vessel the steam is separated from the water, and then fed into a low pressure steam system. The condensate remaining in the flash vessel is discharged into a condensate tank.



Blowdown flash vessel

Blowdown flash vessels are used if the flash steam formed downstream of continuous blowdown valves is to be utilized.

Blowdown receiver

In a blowdown receiver the sludge and water mixture withdrawn from the boiler by the intermittent blowdown valve is separated into flash steam and condensate (residual blowdown).

Pressure-relief valve

When pressure-relief valves of hot water boilers blow off, flash steam is formed which is discharged to atmosphere by a blow-off line. For reasons of safety, to avoid scalding of personnel and damage to equipment by hot water discharged through the blow-off line, a flash vessel is installed between pressure-relief valve and blow-off line where steam and water are separated.

Type	Service pressure [bar]	Service temperature [°C]	Condensate flowrate [t/h]	Volume [l]	Material (DIN reference)
VD	0.5 – 13	111 – 250	1.2 – 40	50 – 1400	S235JRG2 (RSt 37-2) / P265GH (HII)
VD 23-0.3	13	200	0.3	15	S235JRG2 (R St 37-2)
VD 23-1.0	13	200	1.0	15	GG 25
VD 26-0.2	32	250	0.2	15	P265GH (H II)
VD 26-0.7	32	250	0.7	15	GS-C 25

Flash Vessels

Type VD Flash Vessels Systems

Local regulations may restrict the use of this product to below the conditions quoted. In the interests of development and improvement of the product, we reserve the right to change the specification without notice.

