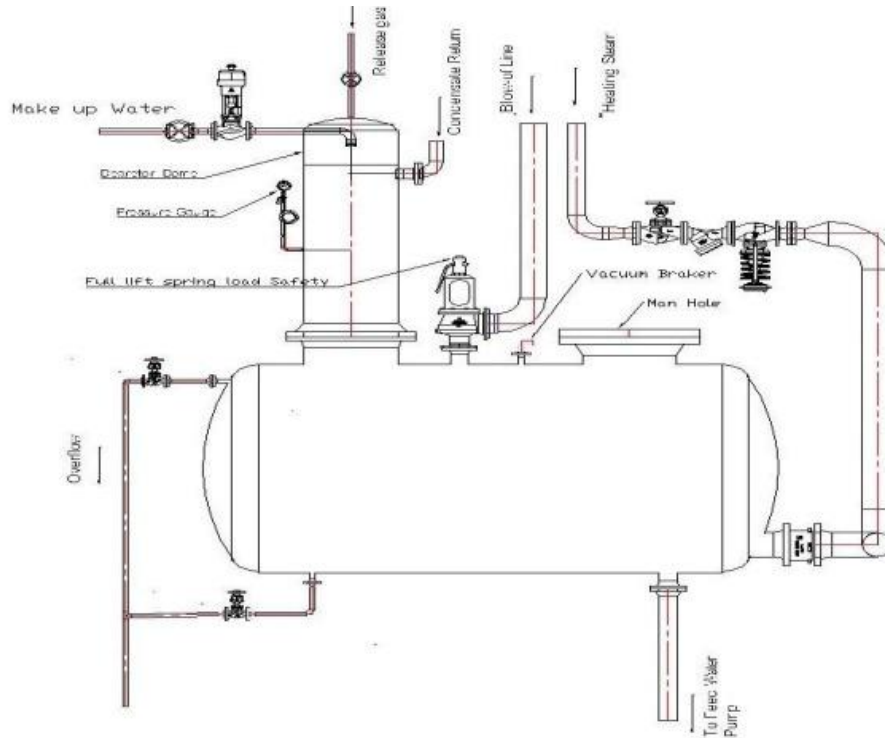


Feedwater DE aerating Plants D32

Local regulations may restrict the use of this product to below the conditions quoted. In the interests of development and improvement of the product, we reserve the right to change the specification without notice.



Application

To avoid corrosion damage to steam boiler plants, the content of aggressive gases, such as oxygen and carbon dioxide, in the feedwater must be as low as possible. The German Technical Supervisory Association has issued directives concerning boiler feedwater quality which are applied by German boiler manufacturers when giving a warranty on their boilers. Thermal deaeration in addition to chemical deaeration is very important for maintaining the required feedwater quality.

Recommendation:

For quality of soft water: Concentration of chloride approx. 50 mg/l Conductivity approx. 250 μ S/cm

Technical Data (Standard)

Max. service pressure	Max. service temperature	Capacity range	Materials (DIN reference)	Residual oxygen
0.5 bar	111°C	0.5 – 120 m ³ /h S	S235JRG2 (R St 37-2) 1.4571	< 0.02 mg/l

Higher pressures on request