

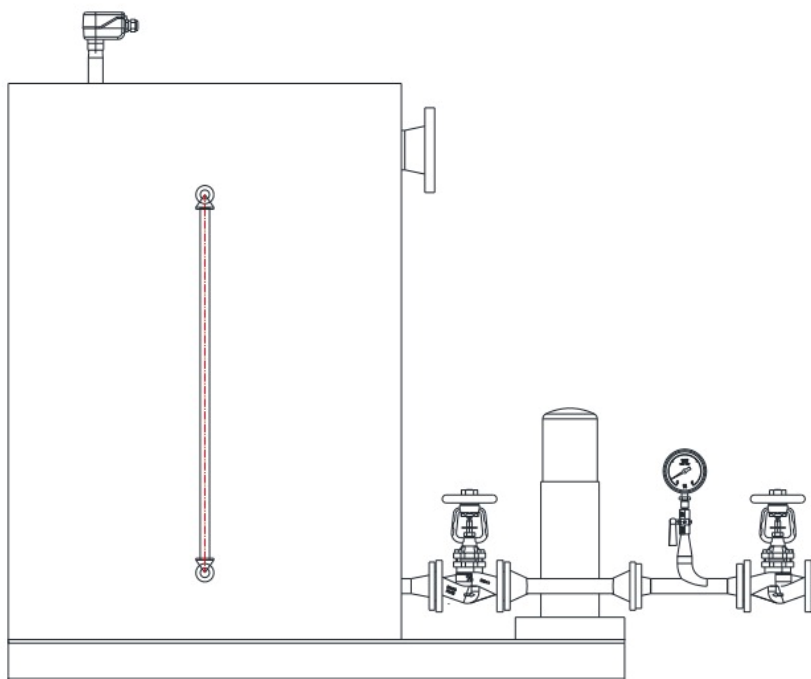
FLUID LINE

CONDENSATE RECOVERY AND RETURN SYSTEM

Local regulations may restrict the use of this product to below the conditions quoted. In the interests of development and improvement of the product, we reserve the right to change the specification without notice.

Condensate tank of rectangular design type

SDR with high-pressure centrifugal pump(s) installed next to the tank



Application

Condensate tanks are used to collect the condensate coming from steam users or flash vessels. From the tank the condensate is pumped into the feed water tank by a level-controlled pump, in most cases via a deaerator.

Rectangular condensate tank type SDR

The standard range of tanks is designed for condensate Flowrates of up to 10 t/h and a max. Service pressure of 0.1 bar g. Tank made of steel type S235JRG2 (St 37-2), inside: untreated, outside: anticorrosion coating with two condensate pumps and accessories Installed next to the tank, e. g. bimetal dial thermometer water-level indicator, level electrode and control for automatic pump operation, Check valves, shut-off valves, high-pressure centrifugal pump(s) and pressure gauge. Completely assembled and interconnected, Control cabinet supplied but not mounted. Max. Condensate temperature 90°C

Optional extras

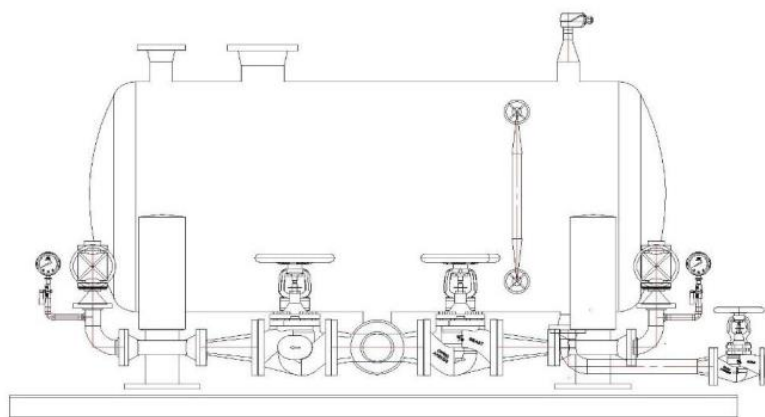
Plastic coating type "A" up to max. 130 °C Plastic coating type "B" up to max. 95 °C Tanks and valves made of other materials available on request. Other pumping capacities and discharge heads on request.

size	VOLUME (l)	PUMPING CAPACITY (M ³ /Hr)
1	340	1
2	550	2
3	740	3
4	1000	4
5	1500	6
6	2000	8
7	2500	10

**CONDENSATE RECOVERY
AND RETURN SYSTEM**

We Sell On Quality

Local regulations may restrict the use of this product to below the conditions quoted. In the interests of development and improvement of the product, we reserve the right to change the specification without notice.

Open-Type Condensate Recovery and Return Tank

Condensate receiver tank of cylindrical design type SD L (S) with highpressure centrifugal pump(s) installed next to the tank L = horizontal design; S = vertical design

size	VOLUME (l)	PUNPING CAPACITY (M^2/Hr)
1	250	1
2	390	2
3	850	4
4	1370	6
5	2100	9
6	2900	12
7	3800	16

Application

Condensate tanks are used to collect the Condensate coming from steam users or Flash vessels. From the tank the condensate is pumped into the feed water tank by a level-controlled pump, in most cases via a deaerator.

Open condensate tank of cylindrical design type SD L (S)

The standard range of cylindrical condensate tanks is designed for condensate flowrates of Up to 30 t/h and a max. Service pressure of 1 bar. Higher flowrates available on request. Tanks available as horizontal and vertical design, made of steel S235JRG2 (St 37- 2), inside: untreated, outside: anticorrosion coating with two highpressure pumps and associated valves and accessories installed next to the tank: e. g. bimetal dial thermometer, Pressure gauge assembly, water-level indicator, level electrode and control for automatic pump operation and Check valves. Completely assembled And interconnected, control cabinet supplied but not mounted.

Optional extras

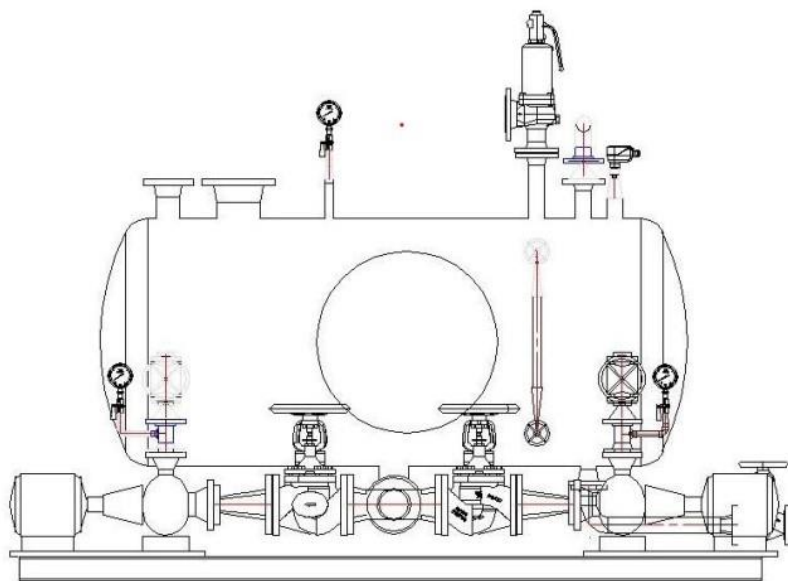
Plastic coating from D = 1000 mm onwards possible: type "A" up to max. 130 °C Plastic coating from D = 1000 mm onwards possible: type "B" up to max. 95 °C other valve and tank materials available on request. Other pumping capacities and discharge heads on request

FLUID LINE

CONDENSATE RECOVERY AND RETURN SYSTEM

Local regulations may restrict the use of this product to below the conditions quoted. In the interests of development and improvement of the product, we reserve the right to change the specification without notice.

Closed-Type Condensate Recovery and Return Tank S L 130



Condensate receiver tank of cylindrical design type SD L (S) with horizontal-type centrifugal pump(s) installed next to the tank
L = horizontal design; S = vertical design

size	VOLUME (l)	PUMPING CAPACITY (M ³ /Hr)
1	250	1
2	390	2
3	850	4
4	1370	6
5	2100	9
6	2900	12
7	3800	16

Application

Condensate tanks are used to collect the Condensate coming from steam users or Flash vessels. From the tank the condensate is pumped into the feed water tank by a Level-controlled pump, in most cases via a Deaerator.

Closed condensate tanks of cylindrical design type SD L (S)

The standard range of cylindrical condensate tanks is designed for condensate flowrates of up to 30 t/h and a max. Service pressure Of 4 bar. Higher pressure ratings and flowrates available On request. Tanks available as horizontal and vertical design, made of steel boiler plate type P265GH (H II), inside: untreated, outside: anticorrosion coating with two horizontal-type Centrifugal pumps and associated valves and accessories installed next to the tank e. g. bimetal dial thermometer pressure gauge assembly, magnetically operated liquid level gauge, level electrode and control for automatic pump operation, safety device, overflow, air vent, vacuum breaker, shut-off valves and Check valves. Completely assembled and interconnected, control cabinet supplied but not mounted.

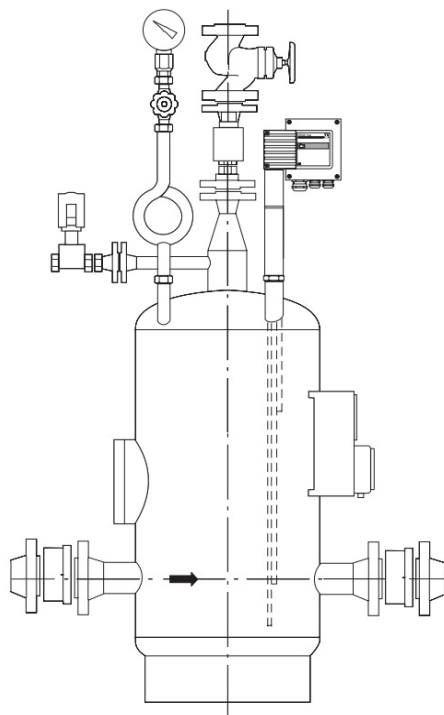
Optional extras

Plastic coating from D = 1000 mm onwards possible: type "A" up to max. 130 °C other valve and tank materials available on request. Other pumping capacities and discharge heads on request

**CONDENSATE RECOVERY
AND RETURN SYSTEM**

We Sell On Quality

Local regulations may restrict the use of this product to below the conditions quoted. In the interests of development and improvement of the product, we reserve the right to change the specification without notice.

Steam Powered Condensate Return Tank FL**Application**

Condensate tanks are used to collect the Condensate from steam processors or flash vessels. From the tank the condensate is returned to the main condensate tank or deaerator with the aid of level-controlled booster steam. Steam-powered condensate return unit FL. The standard version is suitable for condensate flowrates of up to 10 t/h and a max. Service pressure of 13 bar g. Tank made of steel type S235JRG2(St 37-20), inside: untreated, outside: anti-corrosion coating. Associated valves and equipment such as pressure gauge assembly, level electrode and control for automatic booster steam supply, Check valves. Completely assembled, interconnected and equipped with counter flanges, bolts and gaskets.

size	VOLUME (l)	PUMPING CAPACITY (M ³ /Hr)	Booster steam Pressure (bar g))
FL-13-3	75	3	13
FL-10-5	100	5	10
FL-13-6	100	6	13

For more information on booster steam pressure, capacities and discharge head refer to data sheet.