

We sell on quality Ball Float Steam Trap FT12 1/2", 3/4"

Local regulations may restrict the use of this product to below the conditions quoted. In the interests of development and improvement of the product, we reserve the right to change the specification without notice.

Description

The FT 10 is an SG Iron steam trap with integral automatic air venting facility. It is available with horizontal connections with flow from right to left FT 10-(R-L), from left to right FT 10 (L-R) or with vertical connections with flow downward FT 10 (V) As an option a manually adjustable needle valve can be added for use as a steam lock release designated FT 10-S. This is available in all three flow configurations Standards. This product fully complies with the requirements of the European Pressure Equipment.

Limiting conditions

Body design conditions PN 16

PMA-Max. allowable pressure 16 bar g

TMA-Max. allowable temperature 200C

cold hydraulic test pressure 20 bar g

Max- differential pressure

Model	pressure
FT10-4	4 bar
FT10-8	8 bar
FT10-10	10 bar

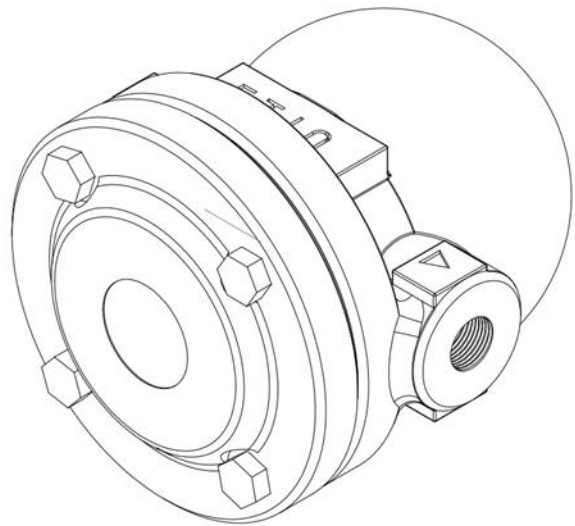
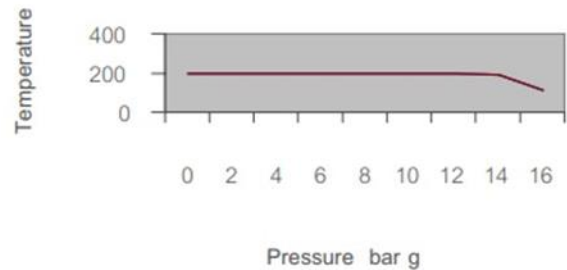
Size and pipe connections

1/2" and 3/4" screw BSP or NPT

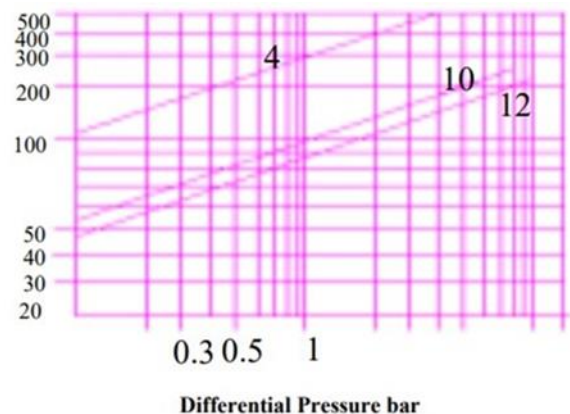
Installation

The trap must be fitted with the float arm in a horizontal plane so that it rises and falls vertically. Therefore, the arrow on nameplate must point downwards. Trap can be supplied with vertical connections with the flow from top inlet to bottom or horizontal connections with the flow right to left or left to right. Unless specified, a right to left will be supplied the connection orientation can be changed on site by undoing the four cover bolts and moving the cover to the preferred flow orientation. A new cover gasket must always be fitted. The FT 10-S is supplied with the steam lock release (SLR) set in the bleed position. The unit should be screwed clockwise to close

Operating range



Capacities chart



We sell on quality Ball Float Steam Trap FT12 1/2", 3/4"

Local regulations may restrict the use of this product to below the conditions quoted. In the interests of development and improvement of the product, we reserve the right to change the specification without notice.

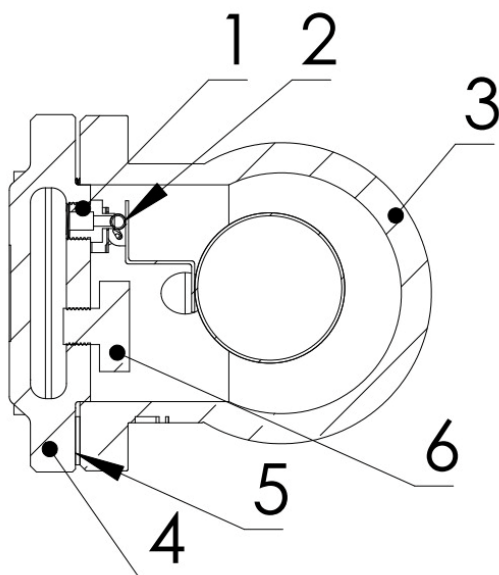
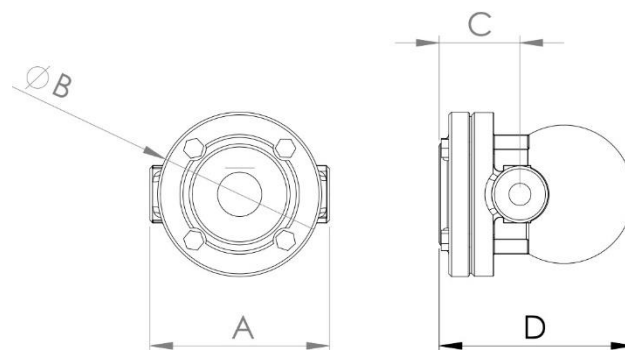
Dimensions (approximate) in millimeters

Size	A	B	C	D	weight
1/2"	130	120	58	141	2.9Kg
3/4"	130	120	58	141	2.9Kg

spare parts

The spare parts available are shown in drawing. Parts drawn in no number are not supplied as spares.

AVAILABLE SPARE	No.
Main Valve Assembly with Float	1,2
Air Vent Assembly	6
Cover plate	4
Cover Gasket (Pkt of 3)	5
Body	3



How to Order

Always order spares by using the description given in the column headed Available Spare and stating the size and type of trap. Example: 1 - Main valve assembly for 1/2" Fluid Line FT-10 Steam Trap. Pressure range 4.5, 10 or bar.

How to Fit-General

with suitable isolation, repairs can be carried out with the trap in the line. When reassembling it is advisable to make sure that all joint faces are clean.

How to Fit Main Valve Assembly

Undo cover bolts and lift off cover. Remove complete float assembly by undoing the two screws. Remove main valve seat and replace with a new one supplied with new gasket. Fit completely new assembly by tightening the assembly set screws. Refit cover using new gasket.